

January 29, 2024

TO: All Property Owners and Concerned Citizens

SUBJECT: Public Involvement Meeting  
Bridge Replacement and Road Improvements  
ID 6925-01-00  
County Road N over Branch Hemlock Creek  
Town of Arpin, Wood County

The Wood County Highway Department is holding a public involvement meeting for the replacement of the County Road N bridge over Branch Hemlock Creek. The meeting will be held on Monday, February 19, 2024, from 5 to 6 pm at the Town of Arpin Fire Station, 8090 Church Road, Arpin, WI 54410. The bridge is located approximately 0.3 miles east of State Highway 186 (location map attached).

The purpose of the project is to maintain and improve County Road N where it crosses Branch Hemlock Creek. Replacing the bridge is the proposed solution. The structure will be replaced with a new, modern structure that satisfies structural loading, hydraulic capacity, and clear width according to state statutes and FHWA requirements.

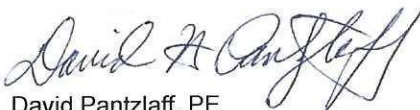
Currently, the project is scheduled for construction in 2025. The bridge will be closed to traffic for approximately 2 ½ months during construction.

Representatives from the Wood County Highway Department and the design firm of Ayres Associates will be available at the meeting or can be contacted directly to address your questions or comments (*see the enclosed comment form*). Persons requiring an interpreter, materials in alternate formats, or other accommodations to access this meeting virtually are encouraged to contact Wood County or Ayres at least 72 hours prior to the meeting so arrangements can be made.

All interested persons are invited to review the project information materials and contact either Wood County or Ayres Associates with comments or questions. Please return comments on the informational materials by **March 4, 2024**.

Sincerely,

Ayres Associates Inc



David Pantzlaff, PE  
Project Engineer  
Office: 715.834.3161  
[PantzlaffD@AyresAssociates.com](mailto:PantzlaffD@AyresAssociates.com)

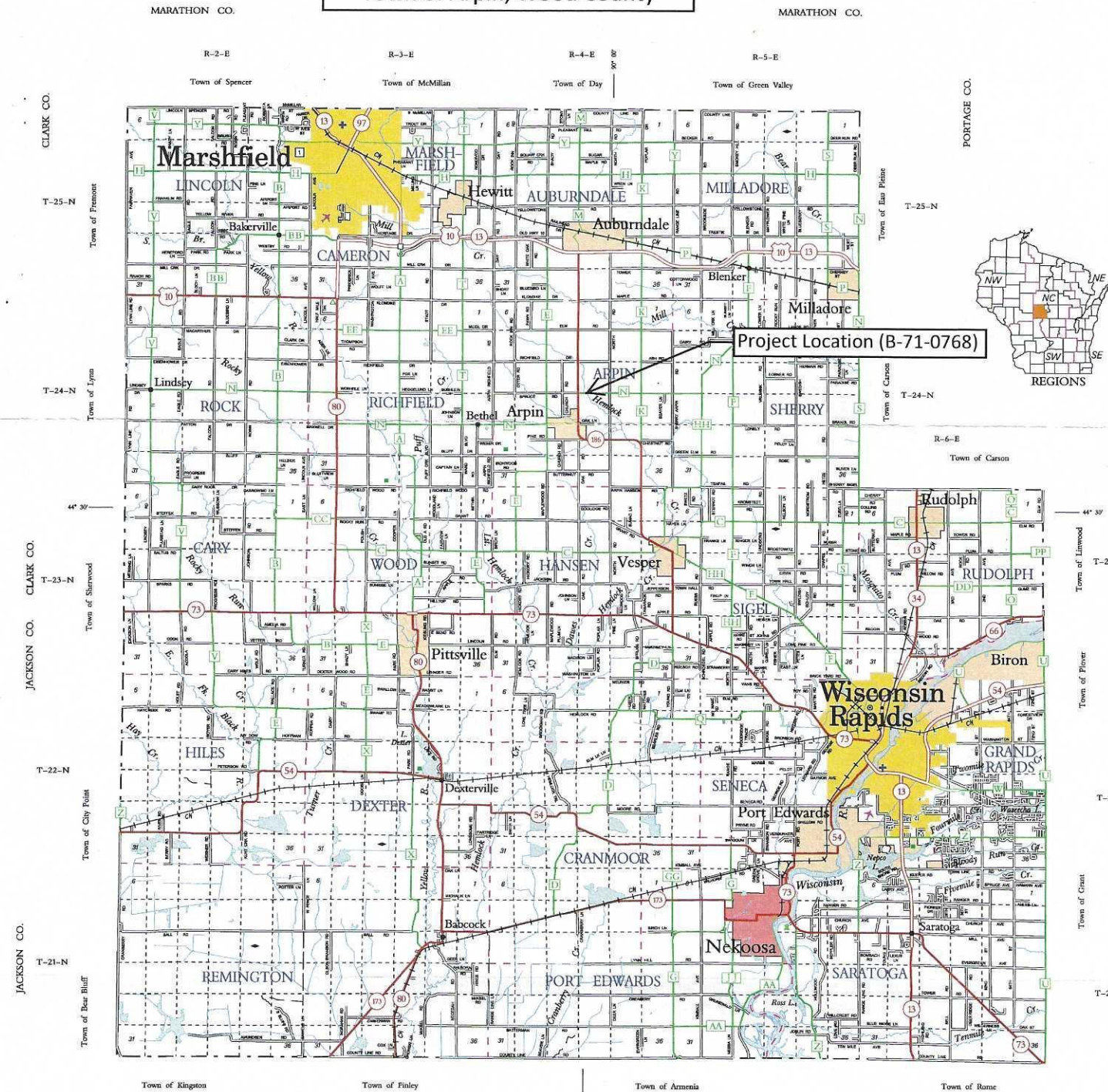
DNS:

Enclosure

cc: Roland Hawk – Wood County Highway Commissioner  
Jason Schaeffer – WisDOT NC Region LPPM



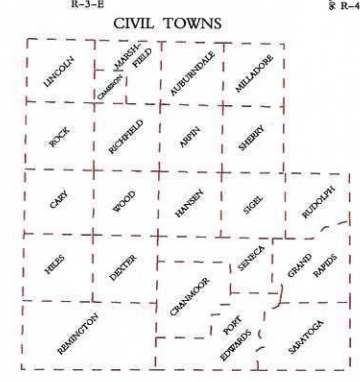
ID 6925-01-00/70  
 CTH N over Branch Hemlock Creek  
 Town of Arpin, Wood County



**LEGEND**

- Freeway
- Multilane Divided
- U.S. or State Hwy
- County Trunk Hwy
- Town Road
- Firelane
- Railroad
- State Trail
- Interchange
- Highway Separation
- Interstate Highway No.
- U.S. Highway No.
- State Highway No.
- County Highway Letter
- State Boundary
- County Boundary
- Civil Town Boundary
- Section Line

- Dam
- Hospital
- Airport
- County Seat
- Unincorporated Village
- Fish Hatchery
- Game Farm
- Public Hunt. or Fish Grds.
- Public Camp & Picnic Grds.
- Ranger Station
- State Park
- County Park - With Facilities
- Without Facilities
- Rest Area - Modern Facilities
- Wayside - Rustic Facilities
- Unin. of Wis. - Marshfield / Wood Co.



**SECTION NUMBERING OF A TOWNSHIP**

6	5	4	3	2	1
7	8	9	10	11	12
13	14	15	16	17	18
19	20	21	22	23	24
25	26	27	28	29	30
31	32	33	34	35	36

**MILES OF HIGHWAY as of Dec. 31, 2009**

STATE	186
COUNTY	324
LOCAL ROADS	1275
OTHER ROADS	13
<b>TOTAL FOR COUNTY</b>	<b>1798</b>

Land Area (2000 Census) 793 sq. mi.  
 Population (2000 Census) 74,919  
 County Seat Wisconsin Rapids

**WOOD CO.**

DEPARTMENT OF TRANSPORTATION  
 Madison, Wisconsin

SCALE 0 1 2 MILES

Corrected for  
 JAN. 2021

Base compiled from U.S.G.S. Quadrangle  
 1:50,000 Series

For boundaries of public hunting and fishing grounds please contact the Department of Natural Resources



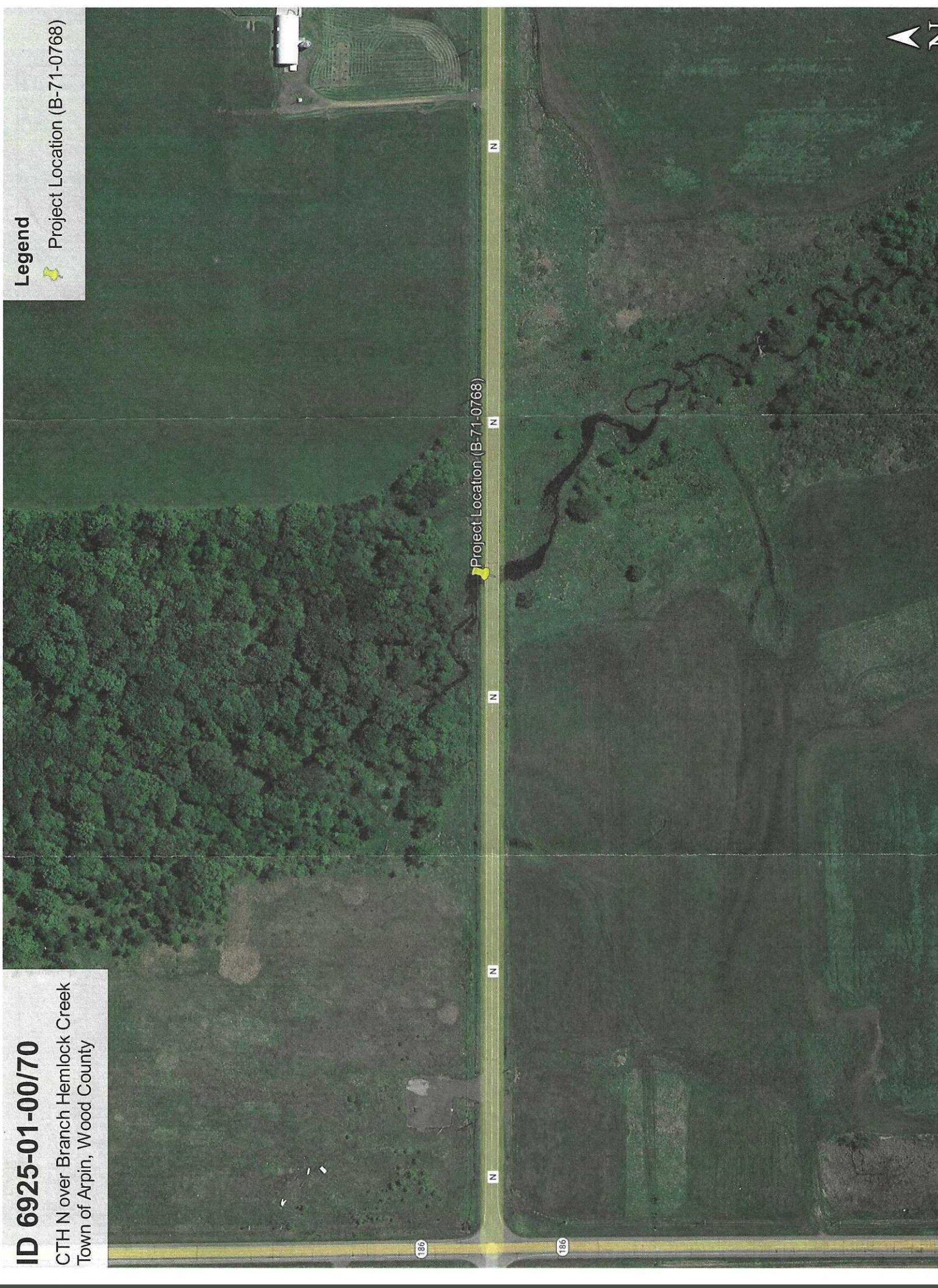
**ID 6925-01-00/70**

CTH N over Branch Hemlock Creek  
Town of Arpin, Wood County

**Legend**



Project Location (B-71-0768)





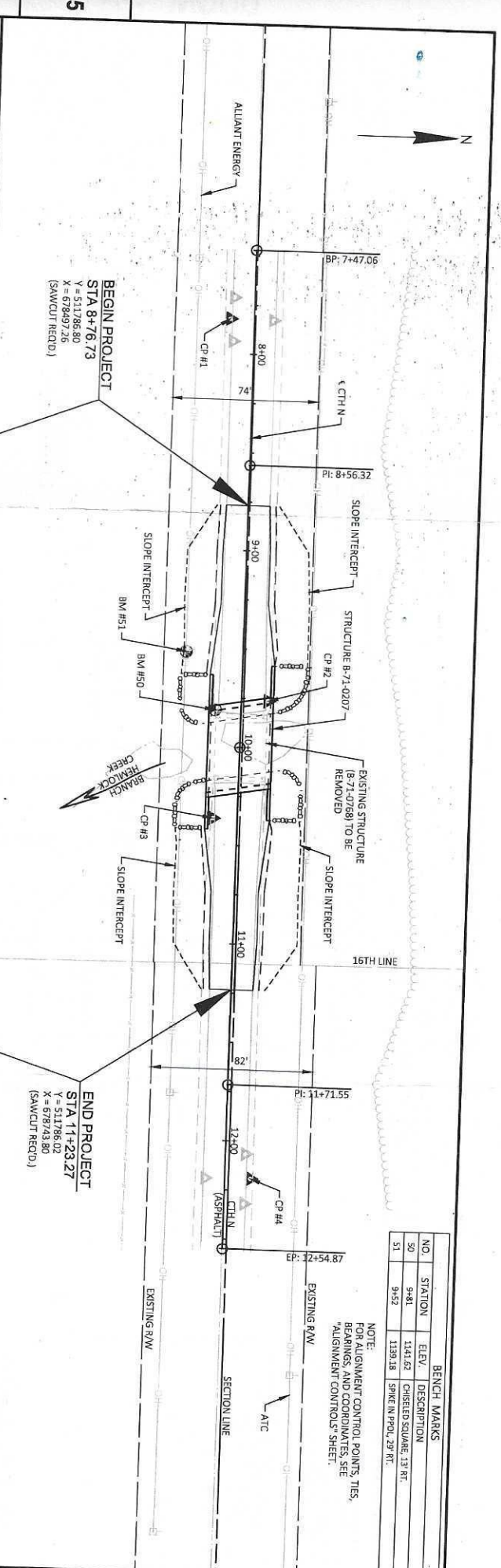






NO.	STATION	ELEV.	DESCRIPTION
50	9+81	1141.62	CORNERED SQUARE 13 RT.
51	9+52	1139.18	SPKEL IN P.O.L. 29' RT.

NOTE:  
FOR ALIGNMENT CONTROL POINTS, TIES,  
BEARINGS AND COORDINATES, SEE  
"ALIGNMENT CONTROL SHEET".



**BEGIN PROJECT**  
STA 8+76.73  
Y = 511786.80  
X = 678497.26  
(SAWCUT REQ'D.)

**END PROJECT**  
STA 11+23.27  
Y = 511786.02  
X = 678743.80  
(SAWCUT REQ'D.)

**EARTHWORK SUMMARY**  
STA. 8+76.73 TO STA. 9+76.75  
EXC. COMMON C.Y.  
FILL C.Y.  
SHR. = 30%  
WASTE C.Y.

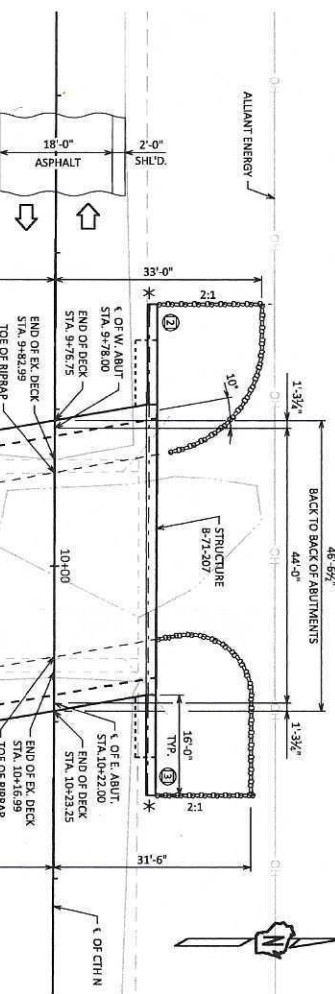
**EARTHWORK SUMMARY**  
STA. 10+23.25 TO STA. 11+23.27  
EXC. COMMON C.Y.  
FILL C.Y.  
SHR. = 30%  
WASTE C.Y.

STA 10+00  
REMOVING STRUCTURE OVER WATERWAY  
REMOVE DEBRIS STRUCTURE 8-71-0788  
SINGLE SPAN CONCRETE SLAB BRIDGE  
25' 8" CLEAR ROWY WIDTH X 34" O.A.L.  
NO SKEW

STA 10+00  
STRUCTURE 8-71-0207 REQ'D.  
SINGLE SPAN CONCRETE FLAT SLAB BRIDGE  
30' 0" CLEAR ROWY WIDTH X 46' 6" O.A.L.  
10 SKEW

STATION	ELEVATION	STATION	ELEVATION	STATION	ELEVATION	STATION	ELEVATION
1120	1142.79	1130	1142.76	1140	1142.68	1150	1142.70
1125	1142.74	1135	1142.68	1145	1142.86	1155	1143.05
1130	1142.70	1140	1142.80	1150	1142.86	1160	1143.05
1135	1142.80	1145	1142.80	1155	1142.87	1165	1142.87
1140	1142.86	1150	1142.87	1160	1142.87	1170	1142.87
1145	1142.86	1155	1142.87	1165	1142.87	1175	1142.87
1150	1142.86	1160	1142.87	1170	1142.87	1180	1142.87
1155	1142.86	1165	1142.87	1175	1142.87	1185	1142.87
1160	1142.86	1170	1142.87	1180	1142.87	1190	1142.87
1165	1142.86	1175	1142.87	1185	1142.87	1195	1142.87
1170	1142.86	1180	1142.87	1190	1142.87	1200	1142.87
1175	1142.86	1185	1142.87	1195	1142.87	1205	1142.87
1180	1142.86	1190	1142.87	1200	1142.87	1210	1142.87
1185	1142.86	1195	1142.87	1205	1142.87	1215	1142.87
1190	1142.86	1200	1142.87	1210	1142.87	1220	1142.87
1195	1142.86	1205	1142.87	1215	1142.87	1225	1142.87
1200	1142.86	1210	1142.87	1220	1142.87	1230	1142.87
1205	1142.86	1215	1142.87	1225	1142.87	1235	1142.87
1210	1142.86	1220	1142.87	1230	1142.87	1240	1142.87
1215	1142.86	1225	1142.87	1235	1142.87	1245	1142.87
1220	1142.86	1230	1142.87	1240	1142.87	1250	1142.87
1225	1142.86	1235	1142.87	1245	1142.87	1255	1142.87
1230	1142.86	1240	1142.87	1250	1142.87	1260	1142.87
1235	1142.86	1245	1142.87	1255	1142.87	1265	1142.87
1240	1142.86	1250	1142.87	1260	1142.87	1270	1142.87
1245	1142.86	1255	1142.87	1265	1142.87	1275	1142.87
1250	1142.86	1260	1142.87	1270	1142.87	1280	1142.87
1255	1142.86	1265	1142.87	1275	1142.87	1285	1142.87
1260	1142.86	1270	1142.87	1280	1142.87	1290	1142.87
1265	1142.86	1275	1142.87	1285	1142.87	1295	1142.87
1270	1142.86	1280	1142.87	1290	1142.87	1300	1142.87
1275	1142.86	1285	1142.87	1295	1142.87	1305	1142.87
1280	1142.86	1290	1142.87	1300	1142.87	1310	1142.87
1285	1142.86	1295	1142.87	1305	1142.87	1315	1142.87
1290	1142.86	1300	1142.87	1310	1142.87	1320	1142.87
1295	1142.86	1305	1142.87	1315	1142.87	1325	1142.87
1300	1142.86	1310	1142.87	1320	1142.87	1330	1142.87
1305	1142.86	1315	1142.87	1325	1142.87	1335	1142.87
1310	1142.86	1320	1142.87	1330	1142.87	1340	1142.87
1315	1142.86	1325	1142.87	1335	1142.87	1345	1142.87
1320	1142.86	1330	1142.87	1340	1142.87	1350	1142.87
1325	1142.86	1335	1142.87	1345	1142.87	1355	1142.87
1330	1142.86	1340	1142.87	1350	1142.87	1360	1142.87
1335	1142.86	1345	1142.87	1355	1142.87	1365	1142.87
1340	1142.86	1350	1142.87	1360	1142.87	1370	1142.87
1345	1142.86	1355	1142.87	1365	1142.87	1375	1142.87
1350	1142.86	1360	1142.87	1370	1142.87	1380	1142.87
1355	1142.86	1365	1142.87	1375	1142.87	1385	1142.87
1360	1142.86	1370	1142.87	1380	1142.87	1390	1142.87
1365	1142.86	1375	1142.87	1385	1142.87	1395	1142.87
1370	1142.86	1380	1142.87	1390	1142.87	1400	1142.87
1375	1142.86	1385	1142.87	1395	1142.87	1405	1142.87
1380	1142.86	1390	1142.87	1400	1142.87	1410	1142.87
1385	1142.86	1395	1142.87	1405	1142.87	1415	1142.87
1390	1142.86	1400	1142.87	1410	1142.87	1420	1142.87
1395	1142.86	1405	1142.87	1415	1142.87	1425	1142.87
1400	1142.86	1410	1142.87	1420	1142.87	1430	1142.87
1405	1142.86	1415	1142.87	1425	1142.87	1435	1142.87
1410	1142.86	1420	1142.87	1430	1142.87	1440	1142.87
1415	1142.86	1425	1142.87	1435	1142.87	1445	1142.87
1420	1142.86	1430	1142.87	1440	1142.87	1450	1142.87
1425	1142.86	1435	1142.87	1445	1142.87	1455	1142.87
1430	1142.86	1440	1142.87	1450	1142.87	1460	1142.87
1435	1142.86	1445	1142.87	1455	1142.87	1465	1142.87
1440	1142.86	1450	1142.87	1460	1142.87	1470	1142.87
1445	1142.86	1455	1142.87	1465	1142.87	1475	1142.87
1450	1142.86	1460	1142.87	1470	1142.87	1480	1142.87
1455	1142.86	1465	1142.87	1475	1142.87	1485	1142.87
1460	1142.86	1470	1142.87	1480	1142.87	1490	1142.87
1465	1142.86	1475	1142.87	1485	1142.87	1495	1142.87
1470	1142.86	1480	1142.87	1490	1142.87	1500	1142.87
1475	1142.86	1485	1142.87	1495	1142.87	1505	1142.87
1480	1142.86	1490	1142.87	1500	1142.87	1510	1142.87
1485	1142.86	1495	1142.87	1505	1142.87	1515	1142.87
1490	1142.86	1500	1142.87	1510	1142.87	1520	1142.87
1495	1142.86	1505	1142.87	1515	1142.87	1525	1142.87
1500	1142.86	1510	1142.87	1520	1142.87	1530	1142.87
1505	1142.86	1515	1142.87	1525	1142.87	1535	1142.87
1510	1142.86	1520	1142.87	1530	1142.87	1540	1142.87
1515	1142.86	1525	1142.87	1535	1142.87	1545	1142.87
1520	1142.86	1530	1142.87	1540	1142.87	1550	1142.87
1525	1142.86	1535	1142.87	1545	1142.87	1555	1142.87
1530	1142.86	1540	1142.87	1550	1142.87	1560	1142.87
1535	1142.86	1545	1142.87	1555	1142.87	1565	1142.87
1540	1142.86	1550	1142.87	1560	1142.87	1570	1142.87
1545	1142.86	1555	1142.87	1565	1142.87	1575	1142.87
1550	1142.86	1560	1142.87	1570	1142.87	1580	1142.87
1555	1142.86	1565	1142.87	1575	1142.87	1585	1142.87
1560	1142.86	1570	1142.87	1580	1142.87	1590	1142.87
1565	1142.86	1575	1142.87	1585	1142.87	1595	1142.87
1570	1142.86	1580	1142.87	1590	1142.87	1600	1142.87
1575	1142.86	1585	1142.87	1595	1142.87	1605	1142.87
1580	1142.86	1590	1142.87	1600	1142.87	1610	1142.87
1585	1142.86	1595	1142.87	1605	1142.87	1615	1142.87
1590	1142.86	1600	1142.87	1610	1142.87	1620	1142.87
1595	1142.86	1605	1142.87	1615	1142.87	1625	1142.87
1600	1142.86	1610	1142.87	1620	1142.87	1630	1142.87
1605	1142.86	1615	1142.87	1625	1142.87	1635	1142.87
1610	1142.86	1620	1142.87	1630	1142.87	1640	1142.87
1615	1142.86	1625	1142.87	1635	1142.87	1645	1142.87
1620	1142.86	1630	1142.87	1640	1142.87	1650	1142.87
1625	1142.86	1635	1142.87	1645	1142.87	1655	1142.87
1630	1142.86	1640	1142.87	1650	1142.87	1660	1142.87
1635	1142.86	1645	1142.87	1655	1142.87	1665	1142.87
1640	1142.86	1650	1142.87	1660	1142.87	1670	1142.87
1645	1142.86	1655	1142.87	1665	1142.87	1675	1142.87
1650	1142.86	1660	1142.87	1670	1142.87	1680	1142.87
1655	1142.86	1665	1142.87	1675	1142.87	1685	1142.87
1660	1142.86	1670	1142.87	1680	1142.87	1690	1142.87
1665	1142.86	1675	1142.87	1685	1142.87	1695	1142.87
1670	1142.86	1680	1142.87	1690	1142.87	1700	1142.87
1675	1142.86	1685	1142.87	1695	1142.87	1705	1142.87
1680	1142.86	1690	1142.87	1700	1142.87	1710	1142.87
1685	1142.86	1695	1142.87	1705	1142.87	1715	1142.87
1690	1142.86	1700	1142.87	1710	1142.87	1720	1142.87
1695	1142.86	1705	1142.87	1715	1142.87	1725	1142.87
1700	1142.86	1710	1142.87	1720	1142.87	1730	1142.87
1705	1142.86	1715	1142.87	1725	1142.87	1735	1142.87
1710	1142.86	1720	1142.87	1730	1142.87	1740	1142.87
1715	1142.86	1725	1142.87	1735	1142.87	1745	1142.87
1720	1142.86	1730	1142.87	1740	1142.87	1750	1142.87
1725	1142.86	1735	1142.87	1745	1142.87	1755	1142.87
1730	1142.86	1740	1142.87	1750	1142.87	1760	1142.87
1735	1142.86	1745	1142.87	1755	1142.87	1765	1142.87
1740	1142.86	1750	1142.87	1760	1142.87	1770	1142.87
1745	1142.86	1755	1142.87	1765	1142.87	1775	1142.87
1750	1142.86	1760	1142.87	1770</			

STATE PROJECT NUMBER  
**6925-01-70**

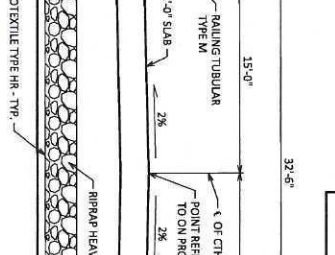


**BENCH MARK**

NO.	STATION	DESCRIPTION	ELEV.
50	9+81	CHISELED SQUARE, 13 RT	
51	9+52	SPIKE IN P.O.L., 28 RT	

- LIST OF DRAWINGS:**
1. GENERAL PLAN
  2. QUANTITIES & NOTES
  3. SUBSTRUCTURE EXPLANATION

REMOVE EXISTING STRUCTURE AS NEEDED. COST INCLUDED IN "REMOVING STRUCTURE OVER WATERWAY MINIMAL DRAWING ITEM." TYPICAL AT ALL SUBSTRUCTURES.



**DESIGN DATA**

LIVELOAD: HL-93  
 DESIGN LOADING: HL-93  
 INVENTORY RATING: RF = 350 (KIPS)  
 OPERATING RATING: RF = 250 (KIPS)  
 WISCONSIN STANDARD PERMIT VEHICLE (WS-SNV) 250 (KIPS)  
 STRUCTURE IS DESIGNED FOR A FUTURE WEARING SURFACE OF 20 POUNDS PER SQUARE FOOT.

**MATERIAL PROPERTIES:**  
 CONCRETE MASONRY: F<sub>c</sub> = 4,000 PSI  
 ALL OTHER CONCRETE & STRUCTURAL APPROACH SLAB: F<sub>c</sub> = 3,500 PSI  
 BAR STEEL REINFORCEMENT: F<sub>y</sub> = 60,000 PSI

**FOUNDATION DATA**

ABUTMENTS TO BE SUPPORTED ON XXXXXX PILING DRIVEN TO A REQUIRED DRIVING RESISTANCE OF XXX TONS \*\* PER PILE AS DETERMINED BY THE MODIFIED GATES DYNAMIC FORMULA.  
 ESTIMATED XXX'-0\"/>

\*\* THE FACTORED AXIAL RESISTANCE OF PILES IN COMPRESSION USED FOR DESIGN IS THE REQUIRED DRIVING RESISTANCE MULTIPLIED BY A DESIGN DISTANCE FACTOR OF 0.5 USING MODIFIED GATES TO DETERMINE PILE CAPACITY.

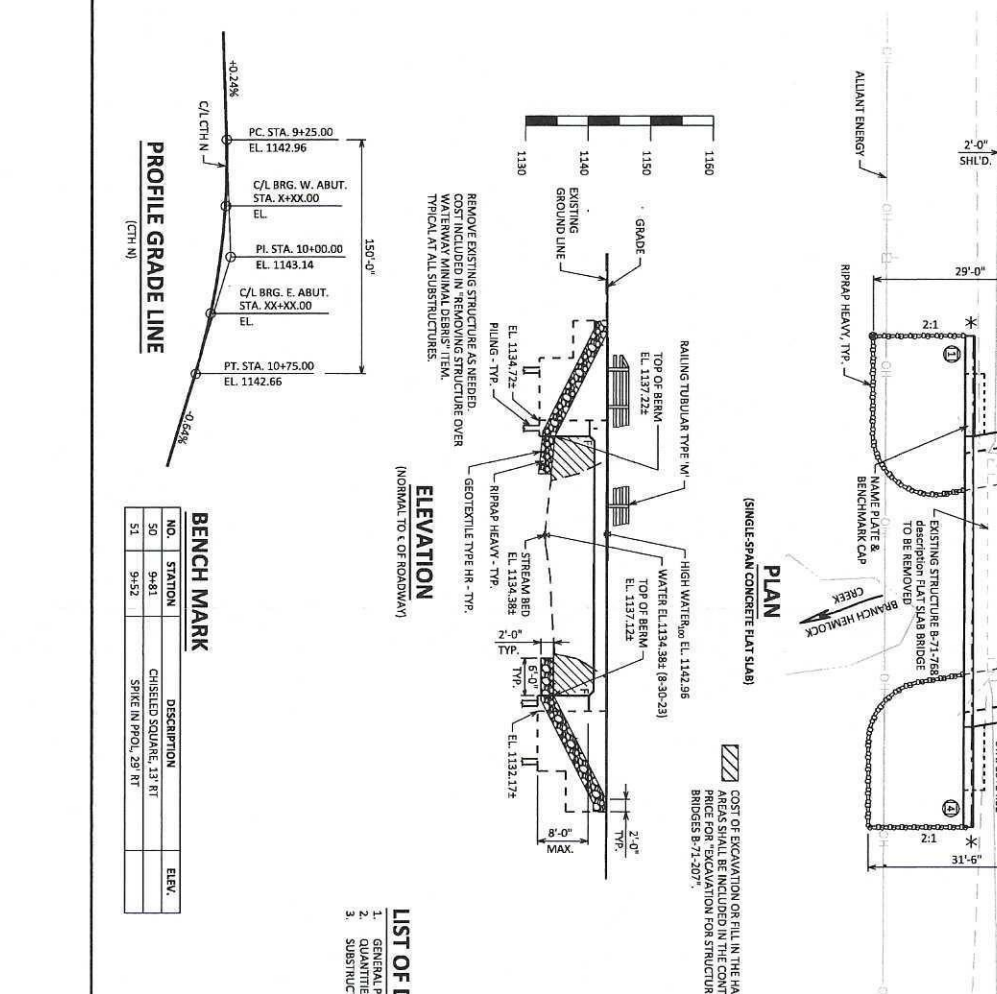
**TRAFFIC DATA**

FEATURE NO: (2025)  
 ADT = 410 (2045)  
 ADI = 480 (2045)  
 R.O.S. = XX MPH

**HYDRAULIC DATA**

100-YEAR FREQUENCY: Q<sub>100</sub> = F.F.S.  
 V<sub>100</sub> = F.F.S.  
 H<sub>100</sub> = EL. F.F.S.  
 W<sub>100</sub> = EL. F.F.S.  
 Y<sub>100</sub> = EL. F.F.S.  
 DRAINAGE AREA = SQ. FT.  
 ROADWAY OVERTOPPING = N/A  
 SCORE CRITICAL CODE =

**EXTRA FREQUENCY:**  
 Q<sub>2</sub> = F.F.S.  
 V<sub>2</sub> = F.F.S.  
 H<sub>2</sub> = EL. F.F.S.

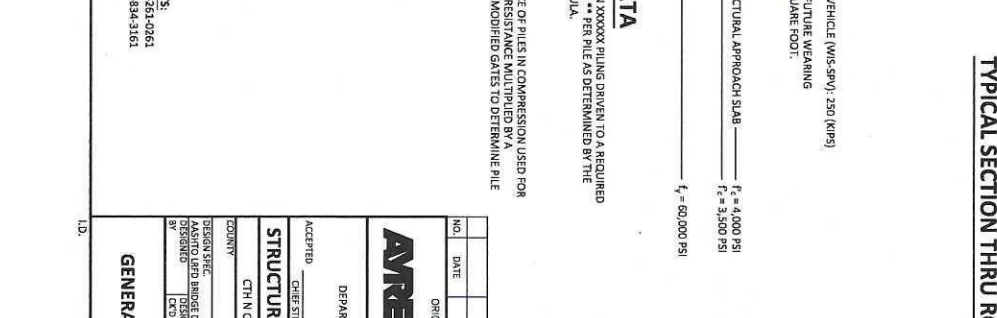


**BENCH MARK**

NO.	STATION	DESCRIPTION	ELEV.
50	9+81	CHISELED SQUARE, 13 RT	
51	9+52	SPIKE IN P.O.L., 28 RT	

- LIST OF DRAWINGS:**
1. GENERAL PLAN
  2. QUANTITIES & NOTES
  3. SUBSTRUCTURE EXPLANATION

REMOVE EXISTING STRUCTURE AS NEEDED. COST INCLUDED IN "REMOVING STRUCTURE OVER WATERWAY MINIMAL DRAWING ITEM." TYPICAL AT ALL SUBSTRUCTURES.



**DESIGN DATA**

LIVELOAD: HL-93  
 DESIGN LOADING: HL-93  
 INVENTORY RATING: RF = 350 (KIPS)  
 OPERATING RATING: RF = 250 (KIPS)  
 WISCONSIN STANDARD PERMIT VEHICLE (WS-SNV) 250 (KIPS)  
 STRUCTURE IS DESIGNED FOR A FUTURE WEARING SURFACE OF 20 POUNDS PER SQUARE FOOT.

**MATERIAL PROPERTIES:**  
 CONCRETE MASONRY: F<sub>c</sub> = 4,000 PSI  
 ALL OTHER CONCRETE & STRUCTURAL APPROACH SLAB: F<sub>c</sub> = 3,500 PSI  
 BAR STEEL REINFORCEMENT: F<sub>y</sub> = 60,000 PSI

**FOUNDATION DATA**

ABUTMENTS TO BE SUPPORTED ON XXXXXX PILING DRIVEN TO A REQUIRED DRIVING RESISTANCE OF XXX TONS \*\* PER PILE AS DETERMINED BY THE MODIFIED GATES DYNAMIC FORMULA.  
 ESTIMATED XXX'-0\"/>

\*\* THE FACTORED AXIAL RESISTANCE OF PILES IN COMPRESSION USED FOR DESIGN IS THE REQUIRED DRIVING RESISTANCE MULTIPLIED BY A DESIGN DISTANCE FACTOR OF 0.5 USING MODIFIED GATES TO DETERMINE PILE CAPACITY.

**TRAFFIC DATA**

FEATURE NO: (2025)  
 ADT = 410 (2045)  
 ADI = 480 (2045)  
 R.O.S. = XX MPH

**HYDRAULIC DATA**

100-YEAR FREQUENCY: Q<sub>100</sub> = F.F.S.  
 V<sub>100</sub> = F.F.S.  
 H<sub>100</sub> = EL. F.F.S.  
 W<sub>100</sub> = EL. F.F.S.  
 Y<sub>100</sub> = EL. F.F.S.  
 DRAINAGE AREA = SQ. FT.  
 ROADWAY OVERTOPPING = N/A  
 SCORE CRITICAL CODE =

**EXTRA FREQUENCY:**  
 Q<sub>2</sub> = F.F.S.  
 V<sub>2</sub> = F.F.S.  
 H<sub>2</sub> = EL. F.F.S.